

# CCR RETRACTOR SYSTEM

CCR-RETRAKTOR SYSTEM

# ABOUT US

**Amaax** International has a history of two decades as a leading manufacturer of surgical instruments and exporting them to the quality conscious health care industry all over the world. Our commitment to excellence has allowed us to establish our customer bases in strategic and vital surgical hubs of the world.

**Amaax** International is known synonymous with high quality, efficient service and close correspondence with its customers. In addition to cost-effective products designed to meet the needs of your business, there are many other reasons to choose **Amaax** International.

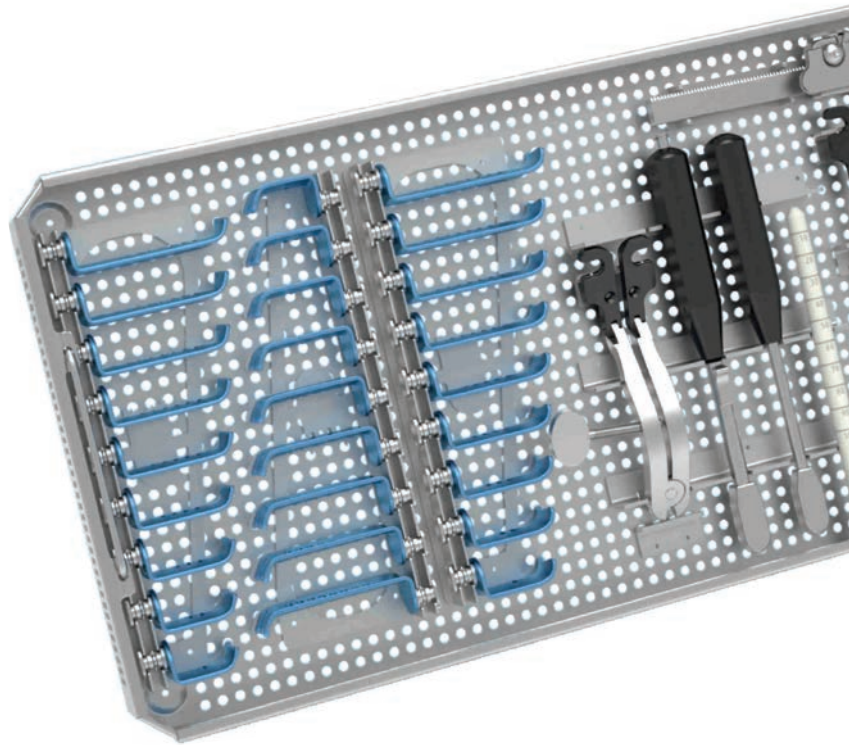
**Amaax** International ist seit zwei Jahrzehnten ein führender Hersteller chirurgischer Instrumente und exportiert diese in die qualitätsbewusste Gesundheitsbranche weltweit. Unser Engagement für Spitzenleistungen hat es uns ermöglicht, einen Kundenstamm in strategisch wichtigen chirurgischen Zentren weltweit aufzubauen.

**Amaax** International steht für hohe Qualität, effizienten Service und enge Kundenkommunikation. Neben kostengünstigen Produkten, die auf die Bedürfnisse Ihres Unternehmens zugeschnitten sind, gibt es viele weitere Gründe, sich für **Amaax** International zu entscheiden.

01 |

## CCR RETRACTOR SYSTEM

CCR-RETRAKTOR SYSTEM





**CCR retractor side-load, double hinge, distal hinge made of titanium**

CCR-Basisretractor Side-load mit Doppelgelenk, Endgelenk aus Titan

218-887-05 \*



**CCR counter retractor side-load, distal hinge made of titanium**

CCR-Gegensperrer Side-load, Endgelenk aus Titan

218-887-06 \*



**CCR basic counter retractor side-load, double hinge, distal hinge made of titanium**

CCR-Basis-Gegensperrer Side-load, mit Doppelgelenk, Endgelenk aus Titan

218-887-07 \*

## CCR RETRACTOR SYSTEM



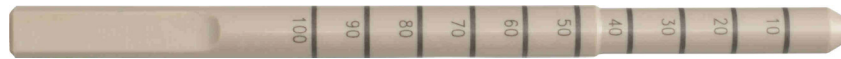
**CCR / CLR handle side-load, with black PPSU handle**  
CCR- / CLR-Handgriff Side-load, mit schwarzem Radelgriff

218-887-09 \*



**CCR / CLR handle side-load, cannulated with Luer-Lock, with black PPSU handle**  
CCR- / CLR-Handgriff Side-load, kanuliert mit Luer-Lock, mit schwarzem Radelgriff

218-887-10 \*



**CCR / CLR depth gauge, natural**  
CCR- / CLR-Tiefenmessstab, natur

218-887-11 \*

**All blades made of Titanium, radiolucent, with side-load-mechanism**

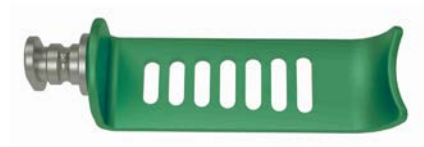
Alle Valven aus Titan, röntgendurchlässig, mit Side-load-Mechanismus

	B - width
green / grün	19 mm
blue / blau	24 mm



**CCR-Valve, 4-zahnig, grün**  
CCR blade, 4 teeth, green

	B - width	T - depth
218-887-15	19 mm	25 mm
218-887-16	19 mm	30 mm
218-887-17	19 mm	35 mm
218-887-18	19 mm	40 mm
218-887-19	19 mm	45 mm
218-887-20	19 mm	50 mm
218-887-21	19 mm	55 mm
218-887-22	19 mm	60 mm
218-887-23	19 mm	65 mm
218-887-24	19 mm	70 mm
218-887-25	19 mm	75 mm



**CCR blade, blunt, longitudinal, green**  
CCR-Valve, stumpf, longitudinal, grün

	B - width	T - depth
218-887-35	19 mm	25 mm
218-887-36	19 mm	30 mm
218-887-37	19 mm	35 mm
218-887-38	19 mm	40 mm
218-887-39	19 mm	45 mm
218-887-40	19 mm	50 mm
218-887-41	19 mm	55 mm
218-887-42	19 mm	60 mm
218-887-43	19 mm	65 mm
218-887-44	19 mm	70 mm
218-887-45	19 mm	75 mm



**CCR blade, 8-teeth, lateral, blue**

CCR-Valve, 8-zahnig, lateral, blau

	B - width	T - depth
<b>218-887-46 *</b>	24 mm	30 mm
<b>218-887-47 *</b>	24 mm	35 mm
<b>218-887-48 *</b>	24 mm	40 mm
<b>218-887-49 *</b>	24 mm	45 mm
<b>218-887-50 *</b>	24 mm	50 mm
<b>218-887-51 *</b>	24 mm	55 mm
<b>218-887-52 *</b>	24 mm	60 mm
<b>218-887-53 *</b>	24 mm	65 mm
<b>218-887-54 *</b>	24 mm	70 mm
<b>218-887-55</b>	24 mm	75 mm



**CCR blade, 5 teeth, medial, blue**

CCR-Valve, 5-zahnig, medial, blau

	B - width	T - depth
<b>218-887-65</b>	24 mm	25 mm
<b>218-887-66 *</b>	24 mm	30 mm
<b>218-887-67 *</b>	24 mm	35 mm
<b>218-887-68 *</b>	24 mm	40 mm
<b>218-887-69 *</b>	24 mm	45 mm
<b>218-887-70 *</b>	24 mm	50 mm
<b>218-887-71 *</b>	24 mm	55 mm
<b>218-887-72 *</b>	24 mm	60 mm
<b>218-887-73 *</b>	24 mm	65 mm
<b>218-887-74 *</b>	24 mm	70 mm
<b>218-887-75</b>	24 mm	75 mm



**CCR blade, blunt, longitudinal, blue**

CCR-Valve, stumpf, longitudinal, blau

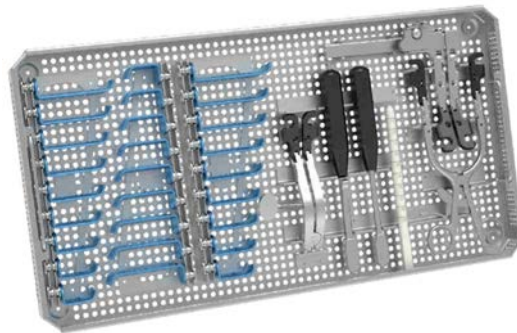
	B - width	T - depth
<b>218-887-85</b>	24 mm	25 mm
<b>218-887-86</b>	24 mm	30 mm
<b>218-887-87 *</b>	24 mm	35 mm
<b>218-887-88 *</b>	24 mm	40 mm
<b>218-887-89 *</b>	24 mm	45 mm
<b>218-887-90 *</b>	24 mm	50 mm
<b>218-887-91 *</b>	24 mm	55 mm
<b>218-887-92 *</b>	24 mm	60 mm
<b>218-887-93 *</b>	24 mm	65 mm
<b>218-887-94 *</b>	24 mm	70 mm
<b>218-887-95 *</b>	24 mm	75 mm



**CCR tray, stainless steel with lid** | CCR-Siebkorb aus Edelstahl mit Deckel  
**dimensions: 485 mm x 253 mm x 30 mm** / Maße

---

218-887-98 \*



**CCR set consisting of products marked "\*" (one piece each)**  
CCR-Set bestehend aus Produkten mit "\*" gekennzeichnet (je 1 Stück)

---

218-887-00



# CCR RETRACTOR SYSTEM

## CCR-RETRAKTOR SYSTEM



### **Amaax International**

Marala Road, Muradpur  
Ferozcolony, near Masjid Taiba

**Mobile:** +92 301 307 3371

**Mail:** Sales@amaaxint.com  
amaaxint@gmail.com

**Website:** [www.amaaxint.com](http://www.amaaxint.com)

### **CCR RETRACTOR SYSTEM**

As of: Mar 09, 2026

Revision 1.0

© Amaax International.

All rights reserved.

Subject to technical changes and errors.

All rights reserved. Technical alterations are possible.